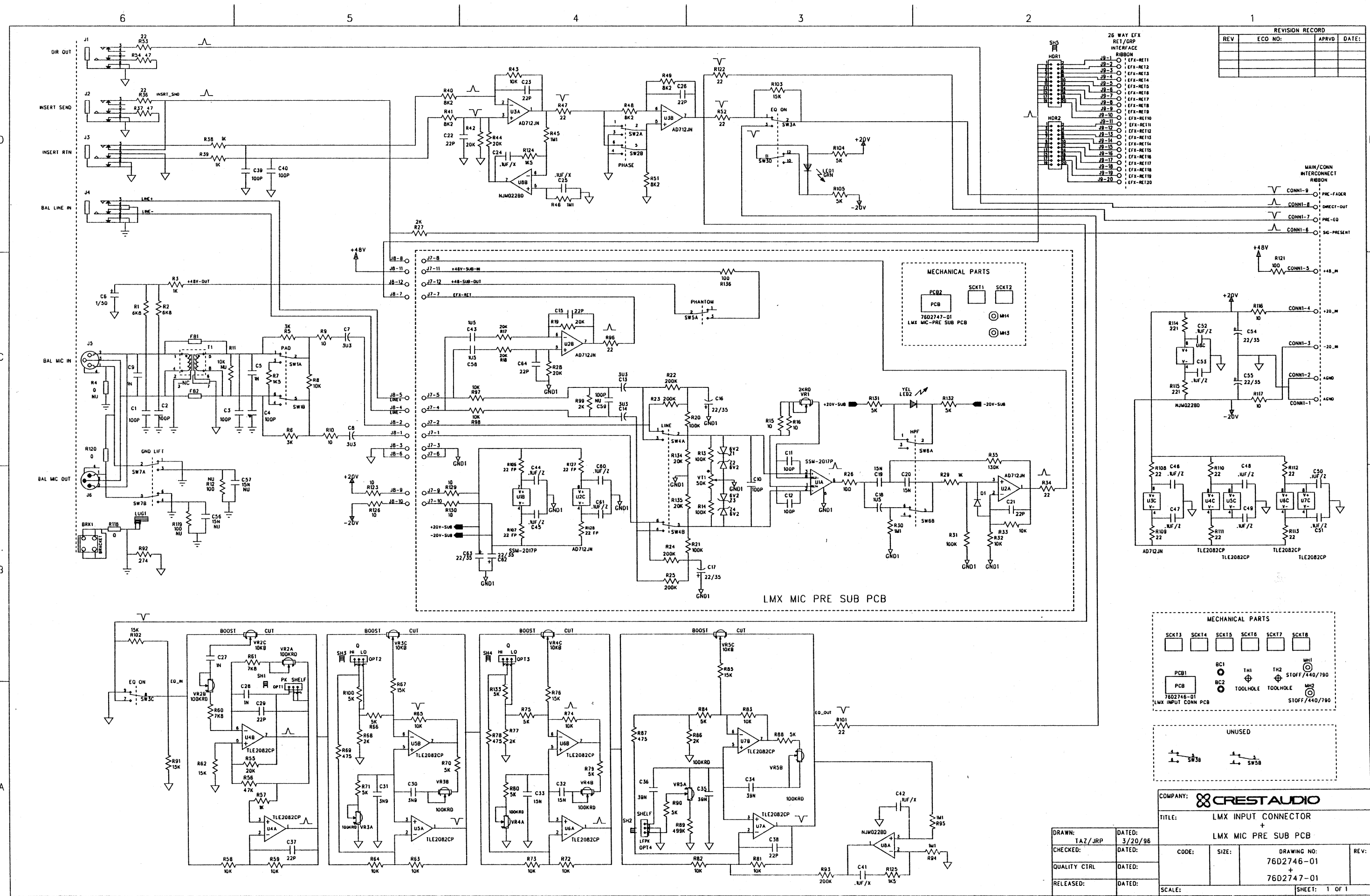




CENTURY LMx SCHEMATICS

LOCATION	DESCRIPTION	SCHEMATIC #	DWG #	REV #
INPUT MODULE	INPUT CONNECTOR / MIC PRE SUB	1	76D274 6/7	01
	INPUT MAIN (1 OF 2)	2	76D2744	02
	INPUT MAIN (2 OF 2)	3	76D2744	02
	INPUT MAIN SUB BOARD	4	76D2745	02
GROUP MODULE	GROUP CONNECTOR / SUB (1 OF 2)	5	76D275 0/1	01
	GROUP CONNECTOR / SUB (2 OF 2)	6	76D275 0/1	01
	GROUP MAIN (1 OF 2)	7	76D2748	02
	GROUP MAIN (2 OF 2)	8	76D2748	02
	GROUP MAIN SUB (1 OF 2)	9	76D2749	01
	GROUP MAIN SUB (2 OF 2)	10	76D2749	01
LEFT / RIGHT MODULE	L R CONNECTOR	11	76D2754	01
	L R CONNECTOR SUB	12	76D2755	01
	L R MAIN (1 OF 2)	13	76D2752	01
	L R MAIN (2 OF 2)	14	76D2752	01
	DYNAMICS SUB BOARD	15	76D2891	00
	L R MAIN SUB (1 OF 2)	16	76D2753	01
	L R MAIN SUB (2 OF 2)	17	76D2753	01
MASTER MODULE	MASTER CONNECTOR (1 OF 2)	18	76D2757	01
	MASTER CONNECTOR (2 OF 2)	19	76D2757	01
	MASTER MAIN (1 OF 2)	20	76D2756	01
	MASTER MAIN (2 OF 2)	21	76D2756	01
METER BRIDGE	DIMMER BOARD	22	N/A	
	LMX METER DEMUX	23	76D2758	01
	TWO GROUP LED	24	76D2817	00
	TWO SOLO LED	25	76D2818	00
	FIVE GROUP LED	26	76D2816	00
	REMOTE VOLUME CONTROL BOARD	27	76B2942	00
RIBBON CABLE PIN OUT DIAGRAMS	RIBBON PIN OUTS	28	N/A	



REVISION RECORD			
REV	ECO NO:	APRVD	DATE:

DRAWN: TAZ/JRP		DATED: 3/20/96	
CHECKED:		DATED:	
QUALITY CTRL		DATED:	
RELEASED:		DATED:	
SCALE:		SHEET: 1 OF 1	

COMPANY: **CRESTAUDIO**

TITLE: **LMX INPUT CONNECTOR + LMx MIC PRE SUB PCB**

CODE: SIZE: DRAWING NO: 76D2746-01 + 76D2747-01

REV: DATE: SCALE: SHEET: 1 OF 1

MECHANICAL PARTS

PCB2 SCKT1 SCKT2

76D2747-01 MH4 MH3

LMx MIC-PRE SUB PCB

MECHANICAL PARTS

SCKT3 SCKT4 SCKT5 SCKT6 SCKT7 SCKT8

PCB1 BC1 TH1 TH2 MH1

76D2746-01 BC2 TOOLHOLE TOOLHOLE STOFF/440/790

LMx INPUT CONN PCB MH2 STOFF/440/790

UNUSED

SW3B SW5B

Schematic #1

